



2.5-ROOM APARTMENT IN SORNARD, NENDAZ – 38 SQ. M

Route de Nendaz 704 | 1997 Sornard (Nendaz) | Reference : 6057255

CHF 950.-/month

TABLE OF CONTENTS

Description page	3
Detailed characteristics and conveniences	4
Big pictures	6

2.5-ROOM APARTMENT IN SORNARD, NENDAZ – 38 SQ. M

CH-1997 Sornard (Nendaz) | Route de Nendaz 704 | **CHF 950.-/month**



2.5-room apartment in Sornard, Nendaz – 38 m²

Located on the 2nd floor with a private entrance, this 38 m² apartment has a warm, inviting atmosphere and features an open-concept kitchen and living room, as well as a private bathroom.

Just a stone's throw from the ski lifts and slopes, it also benefits from a nearby bus stop and direct access to hiking trails—ideal for enjoying the mountains year-round.

Rent: CHF 950/month

CHARACTERISTICS

Reference: **6057255**

Type: **Apartment**

Availability: **01.10.2026**

Rooms: **2.5**

Bedroom: **1**

Bathroom: **1**

Location floor: **2nd floor**

Living area: **38 m²**

Heating type: **Fuel oil**

Heating installation: **Radiator**



CHARACTERISTICS

CH-1997 Sornard (Nendaz) | Route de Nendaz 704 | **CHF 950.-/month**

CHARACTERISTICS

Availability	01.10.2026	Location floor	2nd floor
Type	Apartment	Heating type	Fuel oil
Reference	6057255	Heating installation	Radiator
Rooms	2.5	Standing	Standard
Bedroom	1	Living area	38 m²
Bathroom	1	Exterior parking	1 not included CHF 40.-

CONVENIENCES

NEIGHBOURHOOD

- Mountains
- Bus stop
- Child-friendly
- Ski resort
- Ski lift
- Cross-country ski trail
- Hiking trails
- Medical home
- Doctor
- Thermal center

OUTSIDE CONVENIENCES

- Storeroom
- Parking

INSIDE CONVENIENCES

- Without elevator
- Eat-in-kitchen
- Private bathroom
- Furnished
- Double glazing
- Bright/sunny
- With character
- Traditional solid construction
- Animals allowed

EQUIPMENT

- Fitted kitchen
- Washing machine
- Shower

FLOOR

- Laminated

CONDITION

- Good

VIEW

- Nice view
- Clear
- Valley view
- Panoramic
- With an open outlook
- Rural
- Fields
- Mountains
- Alps

STYLE

- Rustic

INTERIOR VIEW





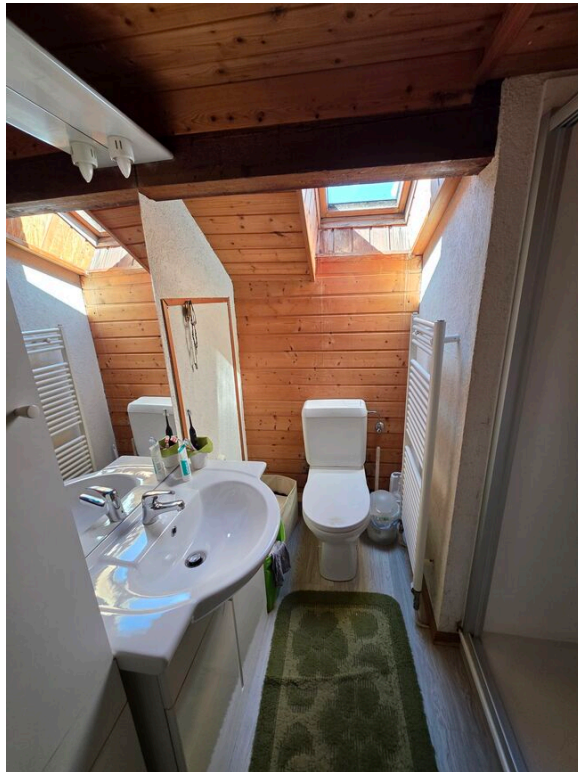














PICTURE(S)



EXTERIOR VIEW

